

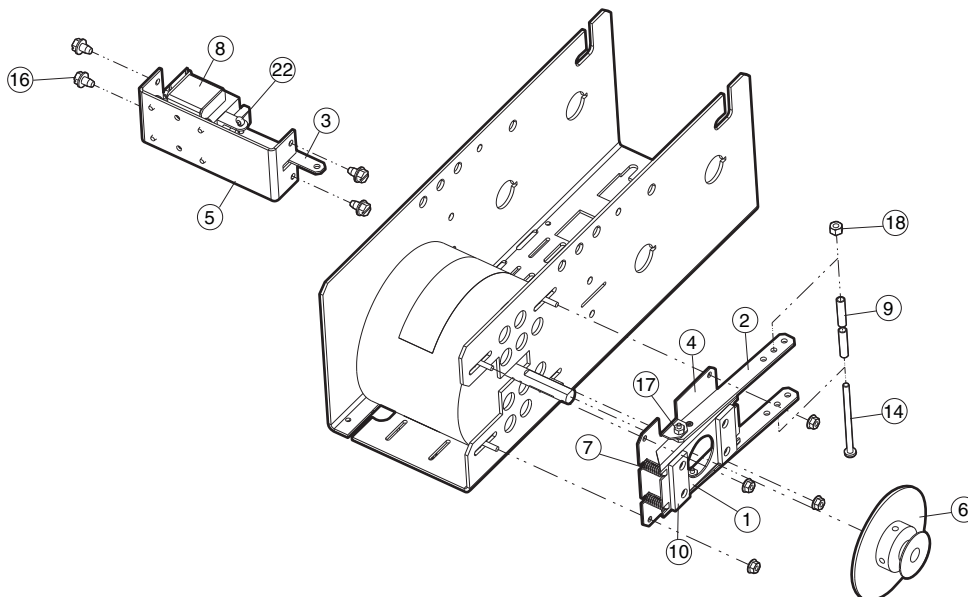
# K75-33877 BRAKE ASSEMBLY REPLACEMENT KIT

## APPLICATION REQUIREMENTS

Replacement of brake assembly and/or its components for a Model BMT Operator.

### CARTON INVENTORY

ITEM	DESCRIPTION	QTY
1	Brake Plate	1
2	Brake Release Arm	2
3	Solenoid Link	1
4	Brake Mounting Plate	1
5	Solenoid Bracket	1
6	Pulley & Disc Assembly	1
7	Comp. Spring .360 O.D. x .045WD	4
8	Brake Solenoid, 120V (BMT 5011)	1
	Brake Solenoid, 230V (BMT 5025)	1
9	Spacer .20 I.D. x .260 O.D. x 1	2
10	Brake Pad	2
11	Rivet 1/8" x .218 Alum. Oval (Not Shown)	1
12	1/4-20 x 3/16 S.S. Knurled Cup (Not Shown)	1
13	Phillips Pan Self Tap Type ZP (Not Shown)	4
14	10-32 x 3" SLTD PN HD ZP	1
15	SH Cap Screw #6-32 W/Knurled Cup (Not Shown)	4
16	Sheet Metal Screw AB Hex Slot	4
17	Locknut #6-32	2
18	Nylon Locknut 10-32 ZP	1
19	#6-32 Hex Locknut Nylon ZP (Not Shown)	2
20	Flatwasher #10 ZP (Not Shown)	4
21	Lock Washer ZP (Not Shown)	4
22	Cotterpin 5/32" x 1-1/2" Long	1



# INSTALLATION

**NOTE:** Refer to the owner's manual provided with the operator for all mounting and wiring instructions.

## **INSTALLATION RECOMMENDATIONS**

1. Close door and secure.
2. Disconnect power to the operator.
3. Remove the drive chain from the operator to the door.
4. Remove operator from its location.
5. Refer to the Owner's Manual provided with the operator for all mounting and wiring instructions.
6. Reset limits after the operator is reinstalled.
7. Reapply power to operator.
8. Test all safety equipment (if applicable) for proper functionality.



## **WARNING**

To prevent possible SERIOUS INJURY or DEATH, disconnect electric power to operator BEFORE installing.