

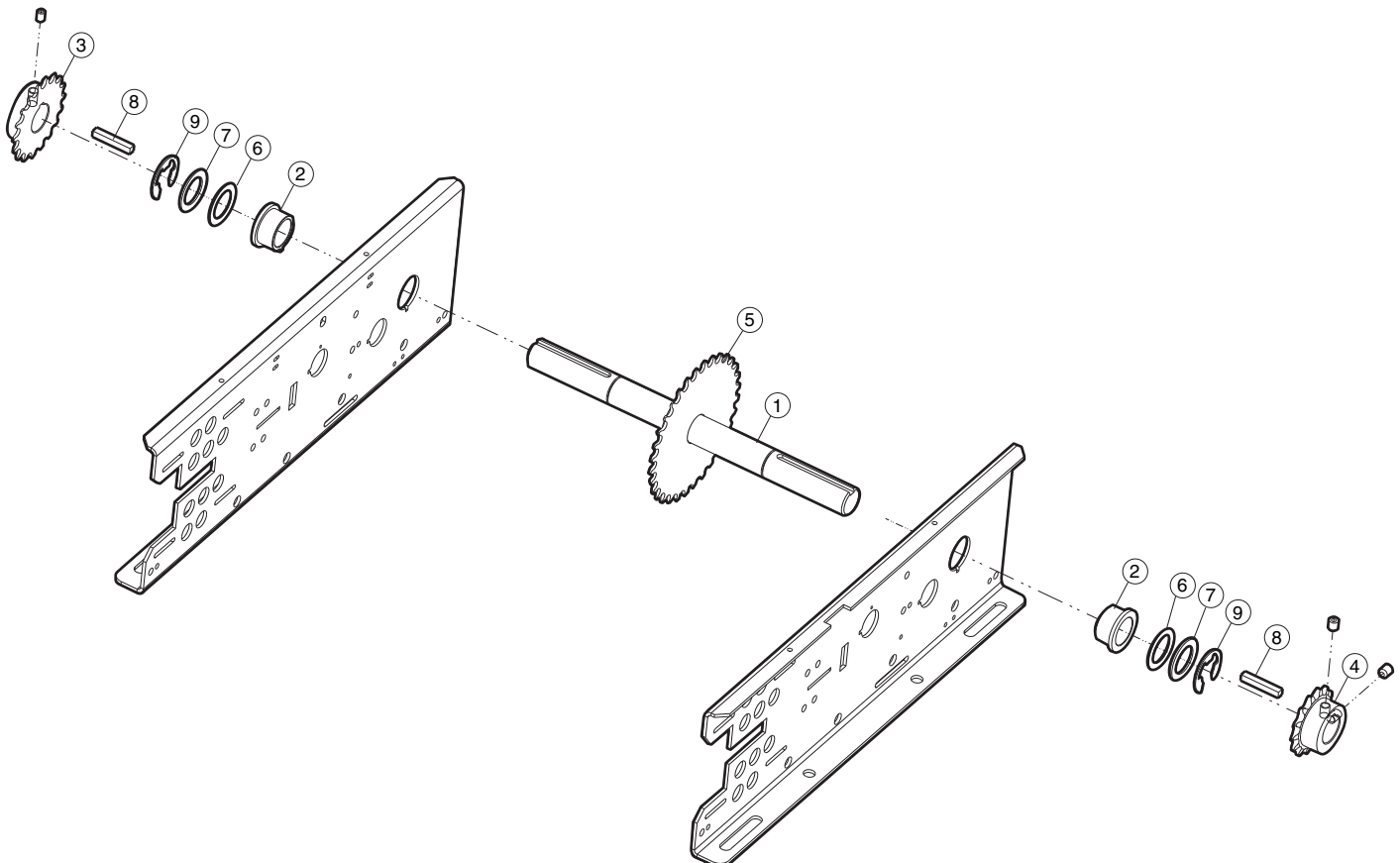
K72-33962 OUTPUT SHAFT ASSEMBLY SERVICE KIT

APPLICATION REQUIREMENTS

Replacement of Output Shaft and/or its components for Medium Duty Logic Model MJ and MH Operators.

PACKING LIST

ITEM	DESCRIPTION	QTY
1	Output Shaft	1
2	Flange Bearing	2
3	Sprocket, #41B14 x 1" Bore	1
4	Sprocket, #48B18 x 1" Bore	1
5	Sprocket, #41B32 x 1" Bore	1
6	Spacer, Thin	2
7	Washer, Thick	2
8	Key 1/4 x 1-1/2" Long	2
9	E Ring, 1" Plated	2
10	Chain, #48x29 Links (Not Shown)	1
11	Chain, #48x43 Links (Not Shown)	1
12	Rollpin, 5/16" x 2" (Not Shown)	1



INSTALLATION

INSTALLATION RECOMMENDATIONS

1. Close door and secure.
2. Disconnect power to the operator.
3. Remove the drive chain from the operator to the door.
4. Remove operator from its location.
5. Refer to the owner's manual provided with the operator for all mounting and wiring instructions.
6. Reset limits after the operator is reinstalled.
7. Reapply power to operator.
8. Test all safety equipment (if applicable) for proper functioning.



WARNING

To prevent possible **SERIOUS INJURY** or **DEATH**, disconnect electric power to operator **BEFORE** installing.