

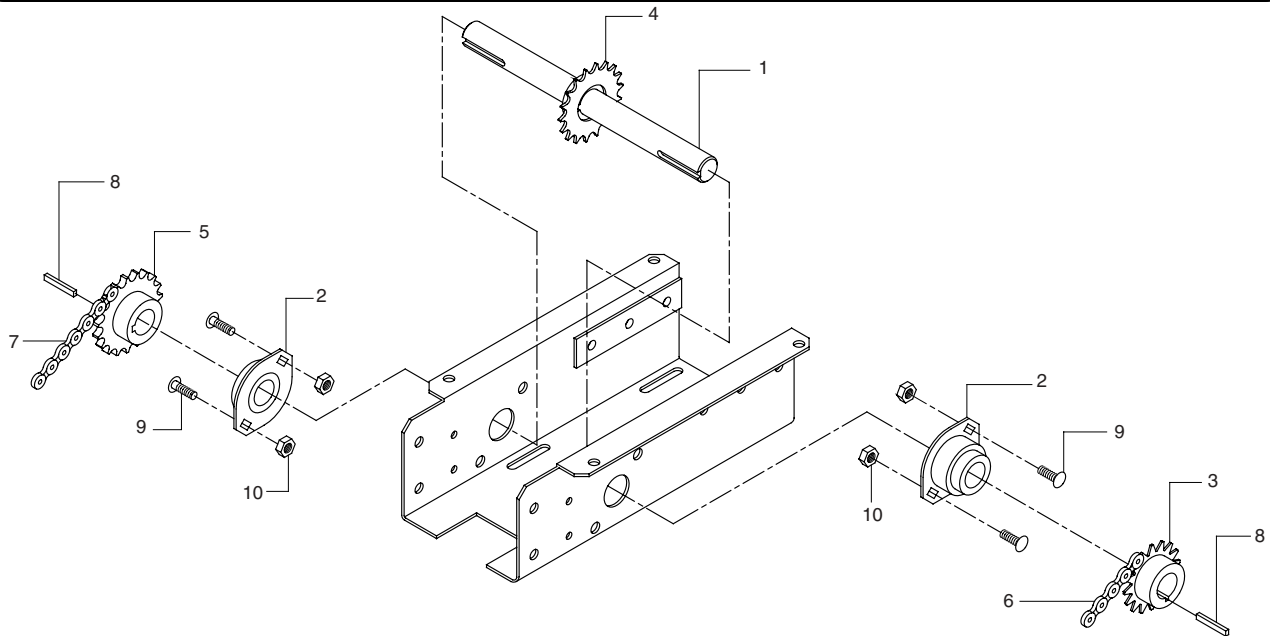
# DRIVE SHAFT ASSEMBLY

FOR MODEL GT OPERATORS

K72-12859

## PACKING LIST

ITEM	DESCRIPTION	QUANTITY	ITEM	DESCRIPTION	QUANTITY
1	Drive shaft	1	6	Drive Chain, #40 w/ Master Link	1
2	Ball bearing 1"	2	7	Limit Chain, #48 w/ Master Link	1
3	Sprocket, 40B19 x 1" bore	1	8	Key, 3/16" x 3/16" x 1-3/8"	2
4	Sprocket, 41B12 x 1" bore	1	9	Carriage Bolt, 5/16-18 x 1/2"	4
5	Sprocket, 48B18 x 1" bore	1	10	Serrated Flange Nut 5/16-18	4



**NOTE:** Refer to the owner's manual provided with the operator for all mounting and wiring instructions.

### REMOVE OLD DRIVE SHAFT

Disconnect power to operator. Remove the master links from the output and limit chains. Remove the chains and set them aside.

Loosen the set screw of one of the exterior sprockets and slide the sprocket from the end of the drive shaft along with its key. Loosen the set screw of the 41B12 sprocket. Carefully slide the drive shaft out of the frame. The loose 41B12 sprocket will slide off the shaft as it is removed. Remove the ball bearings from the housing.

## WARNING

To prevent possible **SERIOUS INJURY** or **DEATH** from electrocution, disconnect electric power to operator **BEFORE** installing.

ALL electrical connections **MUST** be made by a qualified individual.

### INSTALL NEW DRIVE SHAFT

To install the new drive shaft follow the steps outlined above in the reverse order, referring to the illustration and the owner's manual as necessary. Restore power to the operator.