

# DISCONNECT ASSEMBLY SERVICE KIT

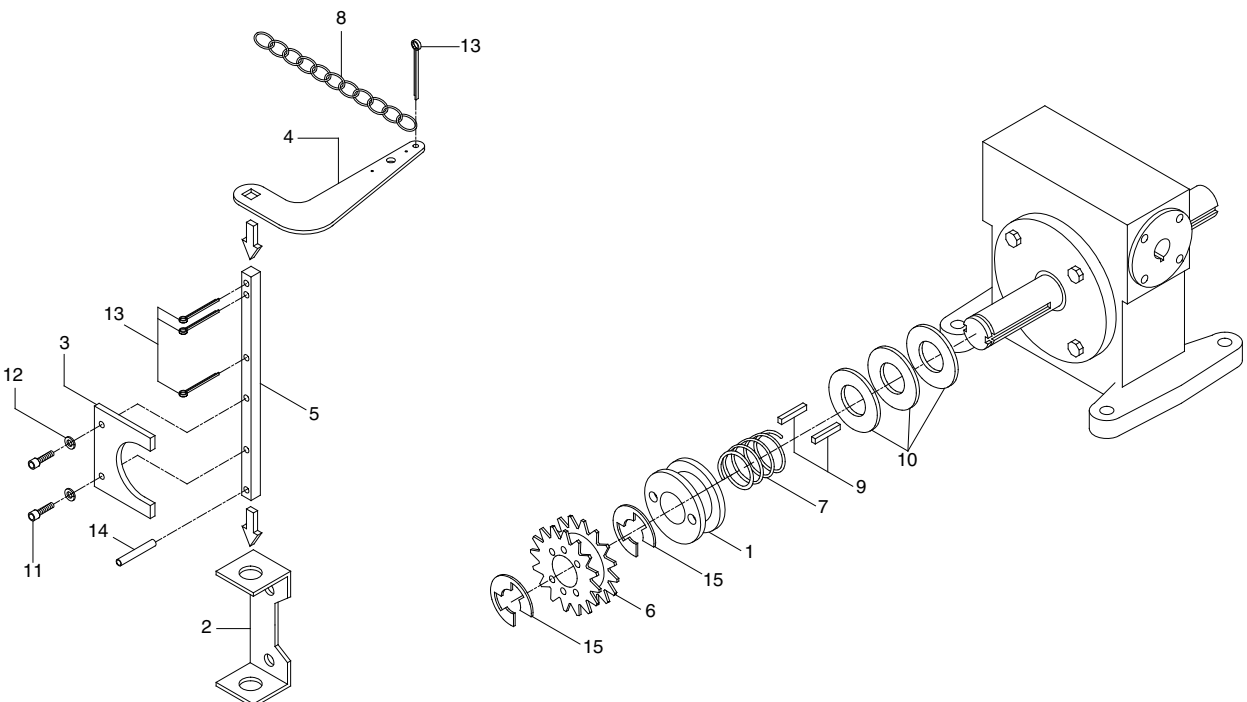
K72-12567

## APPLICATION REQUIREMENTS

Replacement of Disconnect Assembly and/or its components for a Model MGJ Operator.

## PACKING LIST

ITEM	DESCRIPTION	QUANTITY
1	Disconnect Hub	1
2	Disconnect Support Bracket	1
3	Bevel Gear Yoke	1
4	Release Lever	1
5	Disconnect Shaft MGJ	1
6	Sprocket, 41B19 x 1.25 Bore	1
7	Compression Spring	1
8	12ft. Of Sash Chain	1
9	Disconnect Key 1/4 x 1/4 x 7/8	2
10	Washer	3
11	Screw, #10-32 Hex Head Socket	2
12	#10 Lock Washer ZP	2
13	Cotter Pin, 5/32" x 1-3/4" Long	4
14	Roll Pin, 1/8" Dia. x 1" Long	1
15	E-ring, 1" Plated	2



# INSTALLATION

## REMOVE EXISTING ASSEMBLY

1. Disconnect power to operator.
2. Remove the master link from the limit chain, remove the chain and set it aside. Remove the electrical box cover. Disconnect the motor wires that pass into the electrical box.
3. Remove the flanged hex screws (4) securing the electrical box to the motor frame. Remove the box and set it aside.
4. Remove the e-rings (2) securing the sprocket on the gear reducer shaft. Remove the sprocket from the shaft. Remove the screws securing the yoke to the disconnect shaft, set the yoke aside. Remove the cotter pins (3) from the disconnect shaft. Slide the old disconnect shaft out of the support bracket. The release lever will now be free inside the motor frame. Remove the release lever and sash chain from the motor frame. Remove the old disconnect support bracket by first removing the gear reducer housing screws (2). Slide the disconnect hub, compression spring, and flatwasher from the end of the gear reducer shaft.

**NOTE:** Refer to the Owner's Manual supplied with the operator for all mounting and wiring instructions.

## WARNING

To prevent possible **SERIOUS INJURY** or **DEATH**, disconnect electric power at the fuse box **BEFORE** proceeding. If necessary remove the operator from its mounted position.

## INSTALLING NEW ASSEMBLY

1. Insert the roll pin into the end of the disconnect shaft (Figure 1). Attach the sash chain to the end of the release lever with a cotter pin. For the remainder of the installation, follow the steps outlined to the left in reverse order.
2. To re-attach the electrical box, line up the slotted holes in the bottom of the box with the corresponding holes in the motor frame. Attach the box to the frame with the hex screws (4). Do not tighten screws at this time.
3. Replace the limit chain and secure with master link. Slide the new electrical box in its slots until most of the slack in the limit chain is picked up, being careful not to over-tighten chain. Secure the new electrical box to the motor frame by tightening the hex screws.
4. Reconnect the motor wires (as shown in the diagram inside electrical box cover or refer to Owners Manual) and replace the electrical box cover.
5. Reconnect power to operator.

Figure 1

