

K72-12565

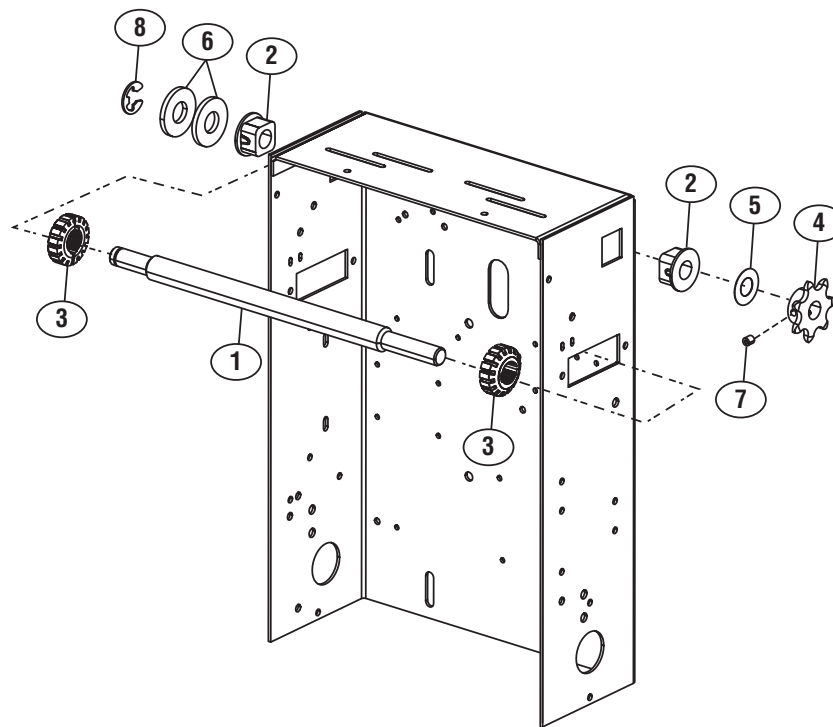
LIMIT SHAFT ASSEMBLY SERVICE KIT FOR MGJ OPERATORS

APPLICATION REQUIREMENTS:

Replacement of Limit Shaft and/or its components for a Model MGJ Logic Control Operator.

PACKING LIST:

ITEM	PART NUMBER	DESCRIPTION	QTY
1	11-11373	Limit Shaft	1
2	12-10458	Flange Bearing, 3/8"	2
3	13-10024	Limit Nut	2
4	15-48B07AXB	Sprocket, 48B07T, 3/8"B	1
5	80-10026	Washer, 3/8"	3
6	85-FW-38	WSH, Plain, 3/8", Flat USS, ST, ZN	2
7	82-NH08-03	SCR, 8-32X03, SSCR, NA, HS, ST, BO, SLNY	2
8	87-E-038	E Ring, 3/8"	1



INSTALLATION INSTRUCTIONS

WARNING

To prevent possible **SERIOUS INJURY** or **DEATH**, disconnect electric power to operator **BEFORE** installing.
ALL electrical connections **MUST** be made by a qualified individual.

 **WARNING:** This product can expose you to chemicals including lead, which are known to the State of California to cause cancer or birth defects or other reproductive harm. For more information go to www.P65Warnings.ca.gov.

NOTE: Refer to the Owner's Manual supplied with the operator for all mounting and wiring instructions. You will be required to reset limit nuts after installation.

REMOVE EXISTING SHAFT:

Remove the master link from the limit chain, remove the chain and place it aside. Remove the electrical box cover. Remove the E-ring and the shims from the end of the limit shaft. To remove the limit shaft pull it out from the sprocket side, loosening the limit nuts as needed. Remove the flange bearings from the electrical box.

INSTALLING NEW LIMIT SHAFT:

To install the new limit shaft follow the steps outlined above in reverse order, referring to the Owner's Manual if necessary. Restoring power completes the installation.