

K72-12510

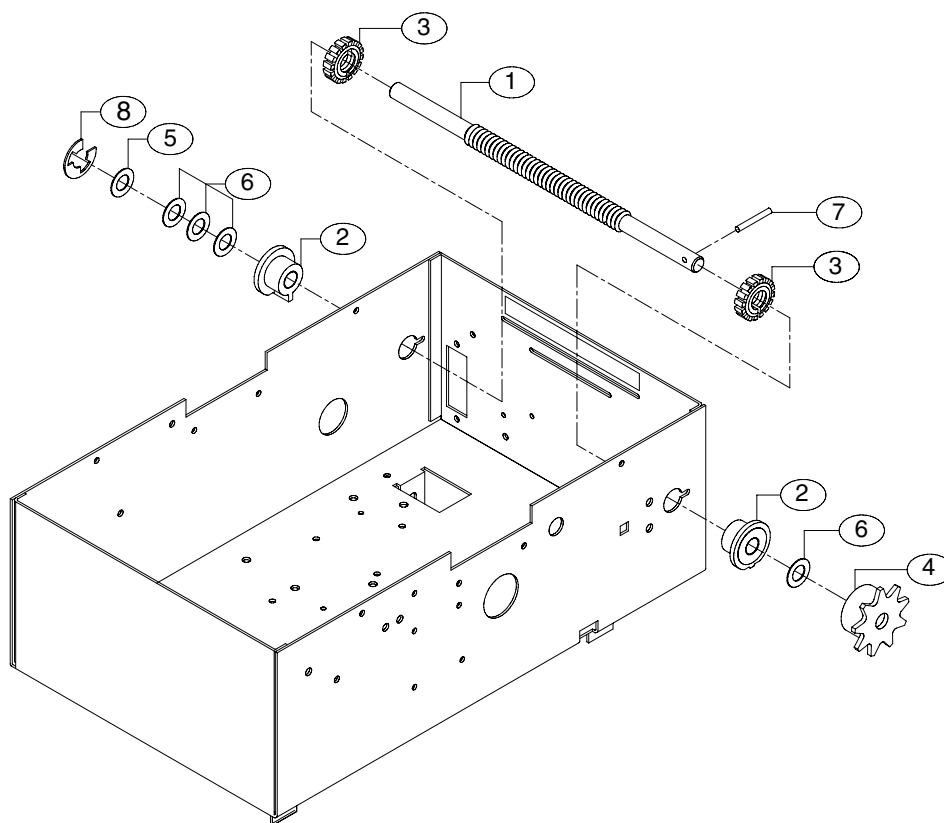
Limit Shaft Assembly Service Kit for Standard Line Operators

APPLICATION REQUIREMENTS:

Replacement of Limit Shaft and/or its components for Standard Line Operators

PACKING LIST:

ITEM	PART NUMBER	DESCRIPTION	QUANTITY
1	11-10021	Limit Shaft, Standard T	1
2	12-10028	Flange Bearing, 3/8" I.D.	2
3	13-10024	Limit Nut	2
4	15-48B9A	Sprocket 48B9 x 3/8" Bore	1
5	80-10025	Washer, Shim 3/8" I.D. x .050 THK.	1
6	80-10026	Washer, Shim 3/8" I.D. x .010 THK.	4
7	86-CP05-108	Roll Pin, 1/8 DIA. x 1 LONG	1
8	87-E-038	E Ring, 3/8"	1



INSTALLATION INSTRUCTIONS



WARNING

DISCONNECT POWER AT THE FUSE BOX BEFORE PROCEEDING. IF NECESSARY REMOVE THE OPERATOR FROM ITS MOUNTED POSITION.

NOTE: Refer to the Owner's Manual supplied with the operator for all mounting and wiring instructions. You will be required to reset limit nuts after installation.

REMOVE EXISTING SHAFT:

Remove the hinged cover from the electrical box. Remove

the master link from the limit chain, remove the chain and place it aside. Remove the e-ring and the shims from the non-sprocket end of the limit shaft. To remove the limit shaft pull it out from the sprocket side, loosening the limit nuts as needed. Remove the flanged bearings from the electrical box.

INSTALLING NEW LIMIT SHAFT:

To install the new limit shaft follow the steps outlined above in reverse order, referring to the Owner's Manual if necessary. Restoring power completes the installation.