

# CAP2D

Smart Access, 2-Door Controller

---



**PRODUCT GUIDE**

**LiftMaster**

POWERED BY myQ

# CAP2D

## Smart Access, 2-Door Controller

A behind the scenes powerhouse, the CAP2D provides a scalable cloud-based solution to easily manage and control access independently or as part of a complete system for resident only and community amenity access points.

### Popular features

#### Multiple-Entrance Control

With myQ® Community.

#### Eliminates Wiring

Between controllers in multiple-entrance applications with myQ Community.

#### Universal Compatibility

With 26-, 30- and 37-bit Wiegand-compatible readers, receivers and readers.

#### Expansive Capacity

For 25,000 active credentials stored locally so residents can enter even when the Internet is down.

#### Remote Programming

And activity monitoring using myQ Community.



#### Easy to Install

In new or existing properties.

#### Backed-up Storage

myQ Community ensures that databases are never lost and a backup lithium battery preserves the system's data during primary power outages.

#### Power over Ethernet (PoE)

Allows for flexibility of device placement.

#### Email Alerts

Over 75 alerts available including door ajar, door closed, door forced open, gate ajar and too many invalid PINs.

#### Real-time Activity Tracking

With myQ Community.

#### Cloud-based Security

Keeps data protected and safeguards resident information.

### Managing credentialed access

myQ® Community cloud-based web platform lets you conveniently manage and control multiple access points across all communities in your portfolio from a single dashboard. With 24/7 ability to easily add/delete residents, assign access to specific entrances and receive real-time activity alerts you can maximize efficiency and improve operations.





### Control for gates

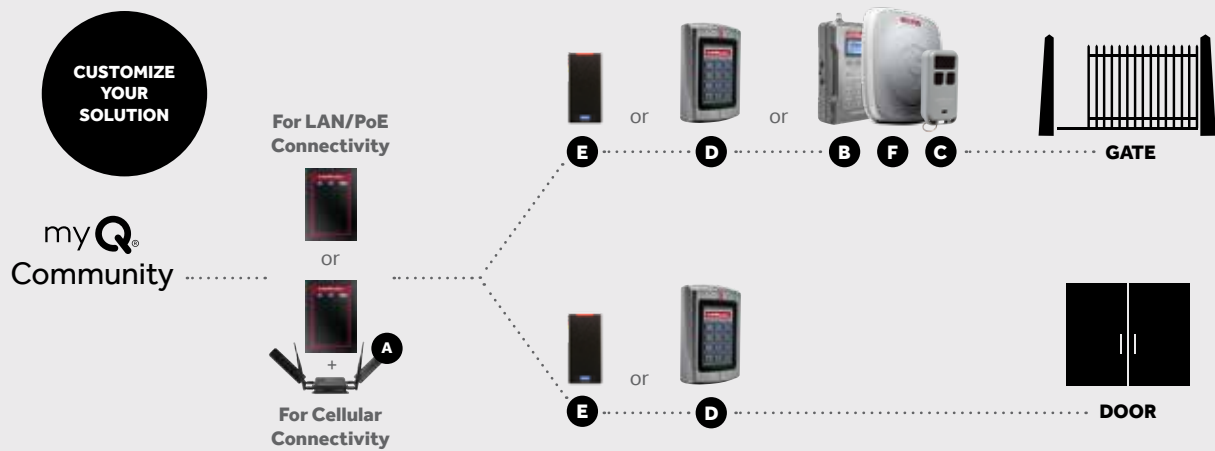
Monitor and control any gated access point through the myQ Community web platform or with personalized vehicle tags and keypad credentials.



### Control for doors

Enable secure, credentialed access to nearly any walk-through door in any residential or commercial application with proximity card readers or keypad credentials.

## Product Ecosystem



\*3-button Passport MAX Remote Controls compatible with the PPWR Receiver for gate access control and LiftMaster residential garage door openers (Security+2.0 and Security+ (315MHz and 390 MHz). 1-Button Passport Lite Remotes not compatible with LiftMaster residential garage door openers.

LEGEND

- A CAPCELL Cellular 4G/LTE Wi-Fi® Modem**  
Connects CAP2D.
- B PPWR Passport Credentialed Receiver**  
Security+ 2.0® receiver compatible with all standard Wiegand protocols.
- C PPV3M / PPK3PHM / PPLK1-X Passport Visor and Keychain Remote Controls with Credentialed IDs**  
Offers residents a single solution to access gates, garages and other community entry points.\*
- D KPR2000 Wired Keypad and Proximity Reader**  
Single-entry multi-function access controller with integrated keypad and card reader.
- E LMMC-MINI / LMPC2-ST Mini-Proximity Reader and Proximity Card**  
For credentialed access.
- F LMSC1000 / LMUNTG / LMHNTG RFID Long-Range Reader and Vehicle Tags**  
Reads RFID vehicle tags 20' - 30' away reducing vehicle congestion.

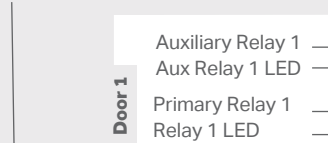
## Specifications

### Administrative USB

Connect Mini-USB cable to access administrative functions

### Power Configuration

Jumper selects between PoE or wired power supply



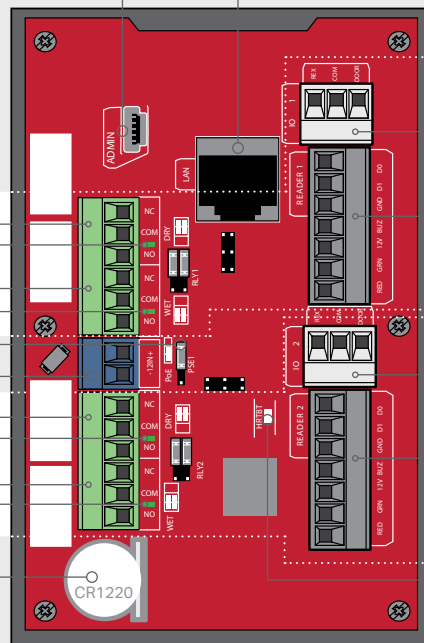
### External

#### 12V Power



### Backup Lithium Battery

Preserves the system's data during primary power outages



### LAN/PoE Connector

Connect to network/ may also carry 802.3af/at power

Request to Exit Status 1

Wiegand Input 1

Request to Exit Status 2

Wiegand Input 2

### Local Heartbeat LED

LED indicates proper function

### Capacities

- 2 controlled gates/doors
- 25,000 local resident capacity
- 6,000 local event history (FIFO) offline from host
- Multiple, holiday and hold-open scheduling
- Compatible Wiegand Input formats: 26 Bit, 30 Bit, 37 Bit (HID) and 32 Bit (MiFare)
- No facility code limitations (1-256 for 26-Bit); feature available to ignore facility code

### Mechanics

- Compact size mounts on standard single electrical-gang box or in a NEMA enclosure
- LED indicator lights communicate status

### Operating Temperatures

- -31°F to 150°F (-35°C to 66°C)

### Communication Internet (Dynamic or Static IP)

- DSL with at least 1 MB download speed
- Cellular (optional CAPCELL)

### Power

- 12VDC, min. 1.5 amps (transformer not included)
- PoE (802.3af) enabled network devices, 13 watts max.
- UL 294<sup>®</sup> Listed
- Backup lithium battery preserves the system's data during primary power outages

### 2 Year Warranty

#### 1 Carton Shipping Details

Dimensions: 7.5"W x 5.0"H x 3.0"D  
 Contents: 1 CAP2D, miscellaneous hardware  
 Weight: 1.0 lb.