

# 84602

Smart Garage Opener with Integrated Dual LED Lighting  
System, Battery Backup, Chain Drive

---



**PRODUCT GUIDE**

# 84602

Smart Garage Opener with  
Integrated Dual LED Lighting System,  
Battery Backup, Chain Drive

---



## Popular features

### DC Motor

Operates with soft start/stop to offer reliable operation year after year.

### myQ® Connected

Control, secure and monitor the garage from the myQ app anytime, from anywhere.

### Secure in-garage delivery

Enables Amazon Key In-Garage Delivery - free for Amazon Prime members.

### Battery backup

Ensures garage access when the power is out.

### Security+ 2.0®

Safeguards garage access by sending a new code with every click of the remote.

### Invisible light beam system

Auto-reverses the garage door if there is an obstruction.

### Posilock® protection

Electronically protects against forced openings of the door.

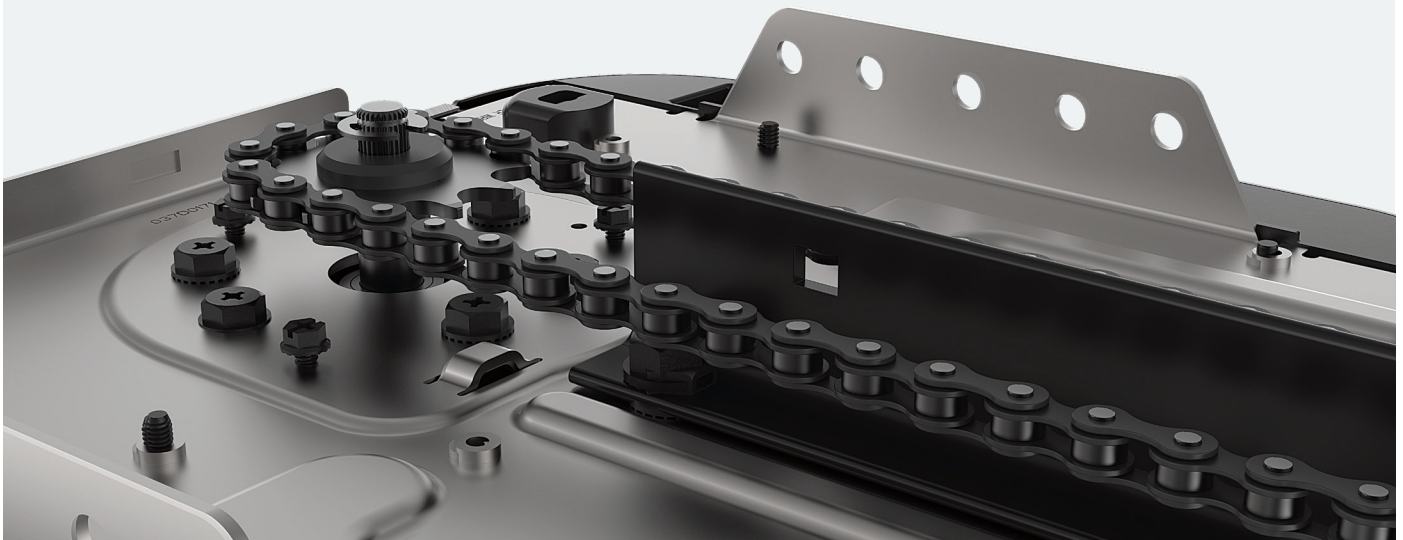
### Motion detection

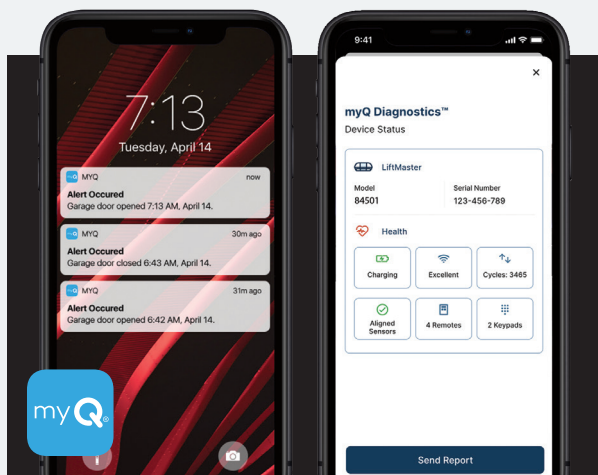
Lights the way automatically for additional safety.

---

## Powerful chain drive

Chain drive system includes a rugged steel construction with precision fabrication for dependable performance, use after use.





## Do more with myQ

Use the myQ app to control, secure and monitor your garage and conveniently share and manage access to your home without sharing passcodes or keys. Also, take the hassle out of service repair and easily connect to a trusted Dealer through the myQ app.



## Integrated dual LED lighting system

Increase the functionality of the garage and never change a garage light bulb again. Dual lighting system provides 1,500 lumens of long-lasting LED light that brightens high traffic areas of the garage.

## In the box

893LM



**3-Button Remote Control**  
Operates up to 3 openers or myQ light accessories.

886LMW



**Motion-Detecting Control Panel**  
Automatically turns garage door opener lights on as soon as you walk in.

485LM



**Garage Door Opener Battery**  
Integrated battery back up allows you to open and close your door even when the power is out.



## Specifications

### Motor

12V DC, 53 RPM, automatic thermal protection

### Mechanics

- Steel chassis, T-rail and trolley; Full reinforced chain drive mechanism (63:1 gear reduction and adjustable door arm);
- Auto-force adjustment for changing weather and environmental conditions
- Electronic limits for easy setup
- DC Wi-Fi logic board with built-in surge suppressor (for replacement logic boards, order part 050DCTB)

### Power

120V AC, 60 Hz voltage, 2.7A current rating, UL Listed, 4' power cord (3-prong)

### Speed

9" per second upward, 6.5" per second downward

### Lighting

Dual light lens LED - 1,500 lumens

### Dimensions

Opener head: 10.5" L x 12.72" W x 8.185" H

*Note: when both decorative doors are open, the width of the opener is 30".*

Rail Options:	7' (1707LM)	8' (1708LM)	10' (1710LM)
Installed Length:	122.5"	139"	163"
Max Opening:	7' 6"	8' 6"	10' 6"

Headroom clearance required: 2"

### Warranties

Lifetime: Motor

1 Year: Parts, Accessories, LED and Battery

### Security+ 2.0

Radio controls:

Operating range ~200'; Operating temperature: -40F to 150F; 3-Button Remote Control (893LM), Remote Control Code Format: Security+2.0, premium remote control is backwards compatible to all LiftMaster® openers manufactured since January, 1993; Garage Door Opener Code Format: Security+2.0; Anti-burglary coding.

Encrypted controls:

Motion-Detecting Control Panel (886LMW); Program remote controls, maintenance alert system, motion-detection, easy Wi-Fi setup.

### myQ Radio

902-928 MHz 50-channel FHSS (frequently hopping spread spectrum); Provides 2-way communication from garage door opener and myQ accessories; Enables monitoring and control of garage door openers via smartphone or tablet.

### HomeLink® compatible (version 4.0 or higher)

May require an external adapter depending on the model and year of vehicle. Visit [HomeLink.com](http://HomeLink.com) for additional information.

### Carton 1 shipping details

Dimensions: 14" x 12" x 11"

Contents: Garage Door Opener Head (84602), Battery (485LM), Motion Detecting Control Panel (886LMW), 3-Button Remote Control (893LM)  
Weight: 23.6 lbs.

### Carton 2 shipping details

Dimensions: 10'4" x 5" x 5" (for 7' rail)

Contents: Assembled Solid-Steel Chain T-Rail  
Weight: 20 lbs.