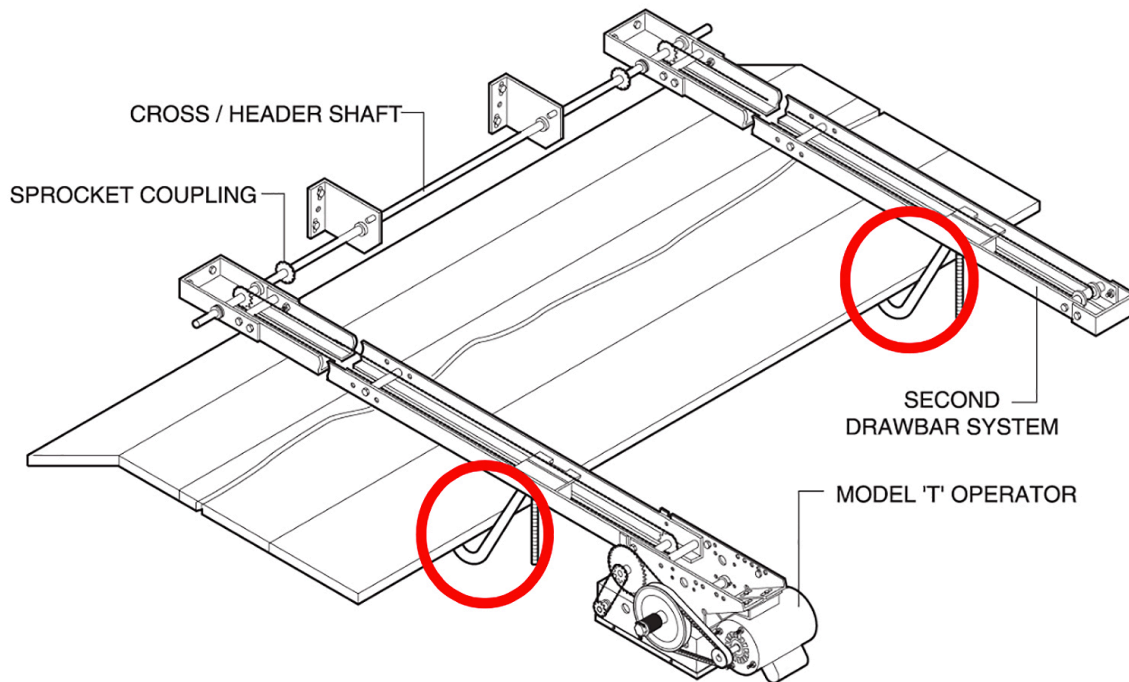


PRODUCT BULLETIN

Date: November 2, 2018
Update Number: P2018-34
Subject: Dual-Trolley Modification Update (M17)
Product Affected: 65-5208 (#48 Chain) and 65-52081 (#41 Chain)

LiftMaster® has recently improved our Dual-Trolley Modification Kits (Field-Installed Hardware Kits) by adding a second curved arm. Previously, these kits included a single curved door arm; they will now include two arms. For dual-trolley applications, please use both of the curved door arms provided with the kit (shown in red below). Discard the curved door arm provided with the trolley operator or save it for future single-trolley use. Using the matched set of curved door arms assures proper alignment and performance for the dual-trolley door system.

Dual-Trolley Modification Kits provide stabilization of the drive system on very wide standard lift sectional doors (over 22') utilizing a drawbar operator, such as the **T or GT Commercial Operator**. The hardware kits greatly reduce the risk of damage to the top section of the door, which might otherwise occur on very wide door driven by a single, centered drawbar system.



For more information regarding this update, please contact your LiftMaster Sales Representative or call our Technical Support Center at 800.528.2806. Please visit Dealer.LiftMaster.com for a complete listing of our Product and Service Bulletins.