

# Receiver Logic Board Replacement

Model 050DCJCFWSD

## ⚠️ WARNING

To prevent possible SERIOUS INJURY or DEATH:

- Disconnect ALL electric and battery power BEFORE performing ANY service or maintenance.

## CAUTION

To prevent damage to the receiver logic board, DO NOT touch printed circuit board of replacement receiver logic board during installation. ALWAYS wear protective gloves and eye protection when changing the battery or working around the battery compartment.



**WARNING:** This product can expose you to chemicals including lead, which are known to the State of California to cause cancer or birth defects or other reproductive harm. For more information go to [www.P65Warnings.ca.gov](http://www.P65Warnings.ca.gov)

**NOTICE:** This device complies with Part 15 of the FCC rules and Industry Canada's license-exempt RSSs. Operation is subject to the following two conditions: (1) this device may not cause harmful interference, and (2) this device must accept any interference received, including interference that may cause undesired operation.

Any changes or modifications not expressly approved by the party responsible for compliance could void the user's authority to operate the equipment.

This device must be installed to ensure a minimum 20 cm (8 in.) distance is maintained between users/bystanders and device.

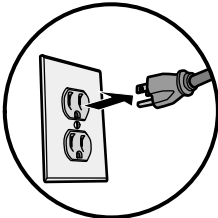
This device has been tested and found to comply with the limits for a Class B digital device, pursuant to part 15 of the FCC rules and Industry Canada ICES standard. These limits are designed to provide reasonable protection against harmful interference in a residential installation. This equipment generates, uses and can radiate radio frequency energy and, if not installed and used in accordance with the instructions, may cause harmful interference to radio communications. However, there is no guarantee that interference will not occur in a particular installation. If this equipment does cause harmful interference to radio or television reception, which can be determined by turning the equipment off and on, the user is encouraged to try to correct the interference by one or more of the following measures:

- Reorient or relocate the receiving antenna.
- Increase the separation between the equipment and receiver.
- Connect the equipment into an outlet on a circuit different from that to which the receiver is connected.
- Consult the dealer or an experienced radio/TV technician for help.

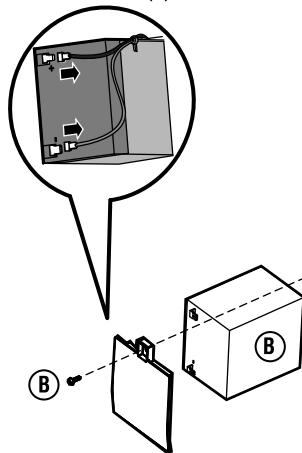
**Before you begin.** Your garage door opener has an internal gateway located on the receiver logic board. After installing the new receiver logic board, use the MyQ® serial number found on the provided label to add your garage door opener to your MyQ® account. The products illustrated in the instructions are for reference. Your product may look different.

myQ SERIAL NUMBER / NUM. DE SÉRIE / NUM. DE SÉRIE	FCC ID: IC: 2666A - IFETEL Cert no.:
MAC ADDRESS / ADRESSE MAC / DIRECCIÓN MAC	CONTAINS / CONTENIR / CONTENER: FCC ID: IC:
PART NO. / NUM. DE PIÉCE / NOM. DE PART. DATE / FECHA:	

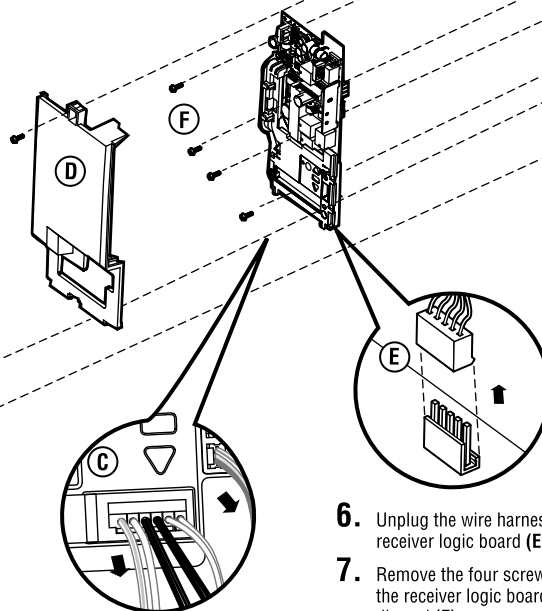
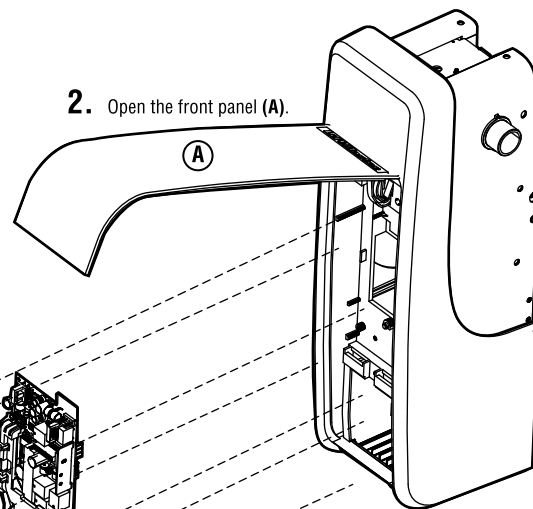
1. Disconnect power.



3. Remove the battery cover. Disconnect the battery (optional accessory). Remove the battery and set aside (B).



2. Open the front panel (A).



4. Label wires for reinstallation. Disconnect the wires from the quick connect terminals (C).
5. Remove the receiver logic board cover (D).

6. Unplug the wire harnesses from the receiver logic board (E).
7. Remove the four screws securing the receiver logic board, remove and discard (F).

8. Install the receiver logic board and connect the wire harnesses. Ensure the wire harnesses are connected properly. Route the antenna through the channel in the cover. Install receiver logic board cover.
9. To maintain your warranty, place the provided label over the existing label on the end panel of the garage door opener (D).
10. Reconnect the wires to the quick connect terminals (C).
11. Install the battery (optional accessory) and connect the battery connectors. Install the battery cover.
12. Reconnect power.
13. Reprogram the travel and test the safety reversal system (see pages 2 and 3).
14. Program any accessories you may have such as remote controls, keyless entries or MyQ Remote LED Lights (see page 4).
15. Use the MyQ app to add the new MyQ serial number to your account.

## Adjustment Program the Travel

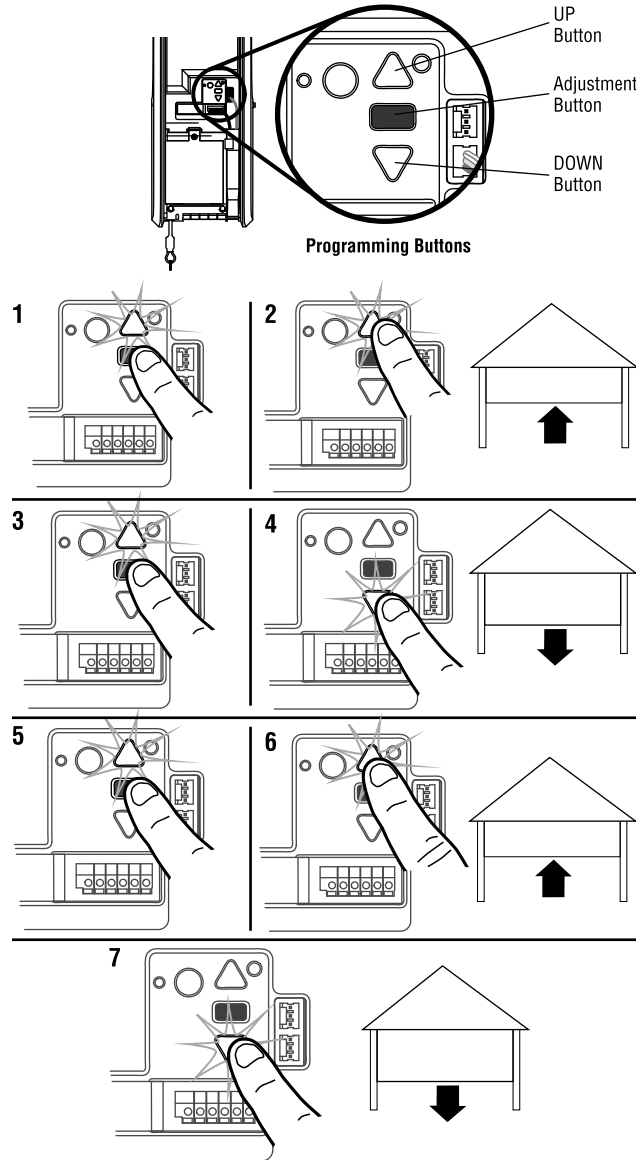
Travel limits regulate the points at which the door will stop when moving up or down.

While programming, the UP and DOWN buttons can be used to move the door as needed.

1. Press and hold the Adjustment Button until the UP Button begins to flash and/or a beep is heard.
2. Press and hold the UP Button until the door is in the desired UP position.
3. Once the door is in the desired UP position press and release the Adjustment Button. The operator will beep and the DOWN button will flash.
4. Press and hold the DOWN Button until the door is in the desired DOWN position.
5. Once the door is in the desired DOWN position press and release the Adjustment Button. The operator will beep and the UP button will flash.
6. Press and release the UP Button. When the door travels to the programmed UP position, the DOWN Button will begin to flash.
7. Press and release the DOWN Button. The door will travel to the programmed DOWN position. Programming is complete.

If you are unable to program the travel:

- Ensure the cable tension monitor is correctly installed (refer to owner's manual).
- Check to see if the safety reversing sensors are misaligned or obstructed (refer to owner's manual). When the sensors are aligned and unobstructed, cycle the door through a complete up and down cycle using the remote control or the UP and DOWN buttons. If you are unable to operate the door up and down, repeat the steps above.



## ⚠ WARNING

Without a properly installed safety reversal system, persons (particularly small children) could be SERIOUSLY INJURED or KILLED by a closing door.

- Incorrect adjustment of door travel limits will interfere with proper operation of safety reversal system.
- After ANY adjustments are made, the safety reversal system MUST be tested. Door MUST reverse on contact with 1-1/2" high (3.8 cm) object (or 2x4 laid flat) on floor.

## CAUTION

To prevent damage to vehicles, be sure fully open door provides adequate clearance.

## Adjustment

### Test the Safety Reversal System

#### Test

1. With the door fully open, place a 1-1/2 inch (3.8 cm) board (or a 2x4 laid flat) on the floor, centered under the garage door.
2. Operate the door in the down direction. The door **MUST** reverse when it makes contact with the board.

#### Adjust

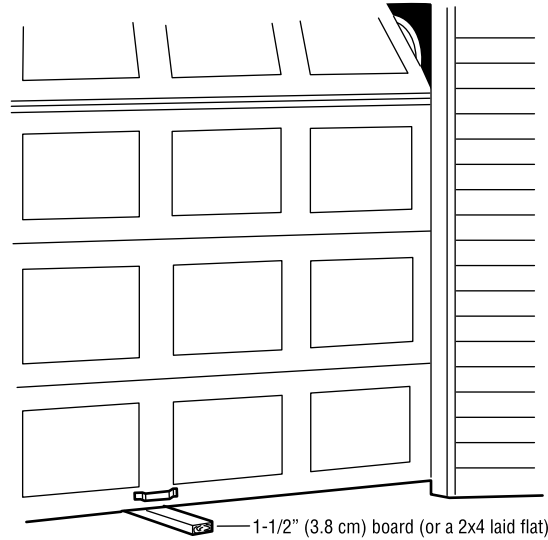
If the door stops but does not reverse:

1. Review the installation instructions provided to insure all steps were followed.
2. Repeat Program the Travel (see Adjustment Step 1).
3. Repeat the Safety Reversal test. If the test continues to fail, call a trained door systems technician.

#### Important safety check:

Test the Safety Reverse System after:

- Each adjustment of limits.
- Any repair to or adjustment of the door (including springs and hardware).
- Any repair to or buckling of the floor.
- Any repair to or adjustment of the operator.



## ⚠ WARNING

Without a properly installed safety reversal system, persons (particularly small children) could be **SERIOUSLY INJURED** or **KILLED** by a closing door.

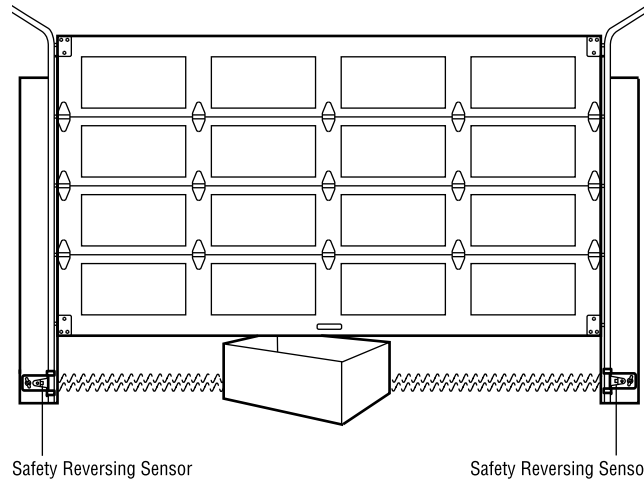
- Safety reversal system **MUST** be tested every month.
- After **ANY** adjustments are made, the safety reversal system **MUST** be tested. Door **MUST** reverse on contact with 1-1/2" (3.8 cm) high object (or 2x4 laid flat) on the floor.

### Test the Protector System®

1. Press the control station button to open the door.
2. Place the operator carton in the path of the door.
3. Press the control station button to close the door. The door will not move more than an inch (2.5 cm).

The operator will not close from a control station if the indicator light in either sensor is off (alerting you to the fact that the sensor is misaligned or obstructed).

**If the operator closes the door when the safety reversing sensor is obstructed, do not operate the door. Call for a trained door systems technician.**



## ⚠ WARNING

Without a properly installed safety reversing sensor, persons (particularly small children) could be **SERIOUSLY INJURED** or **KILLED** by a closing door.

# Programming Remote Control

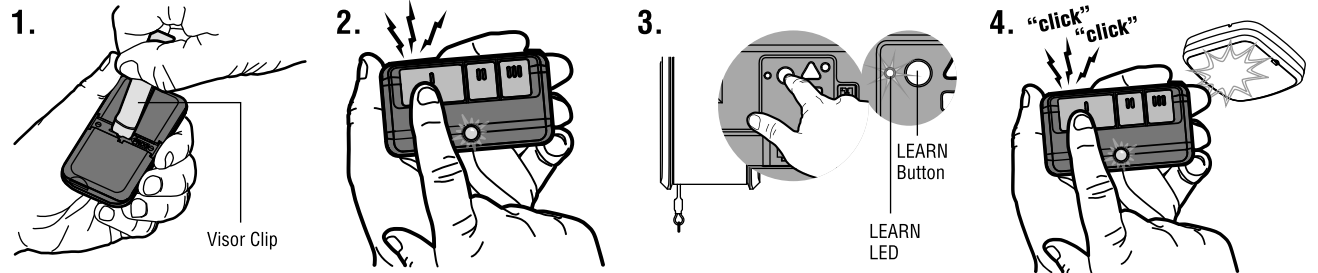
## Remote sold as an optional accessory.

Up to 40 Security+ 2.0<sup>®</sup> remote controls can be programmed to the operator. Older LiftMaster remote controls are NOT compatible. To program additional accessories refer to the instructions provided with the accessory or visit LiftMaster.com. If your vehicle is equipped with a Homelink<sup>®</sup>, you may require an external adapter depending on the make, model, and year of your vehicle. Visit [www.homelink.com](http://www.homelink.com) for additional information.

Press and release the yellow LEARN button, then press and hold the button on the remote control, or enter your 4-digit pin and hold ENTER. If programming is not successful, proceed through the steps below or download the instructions for your specific accessory.

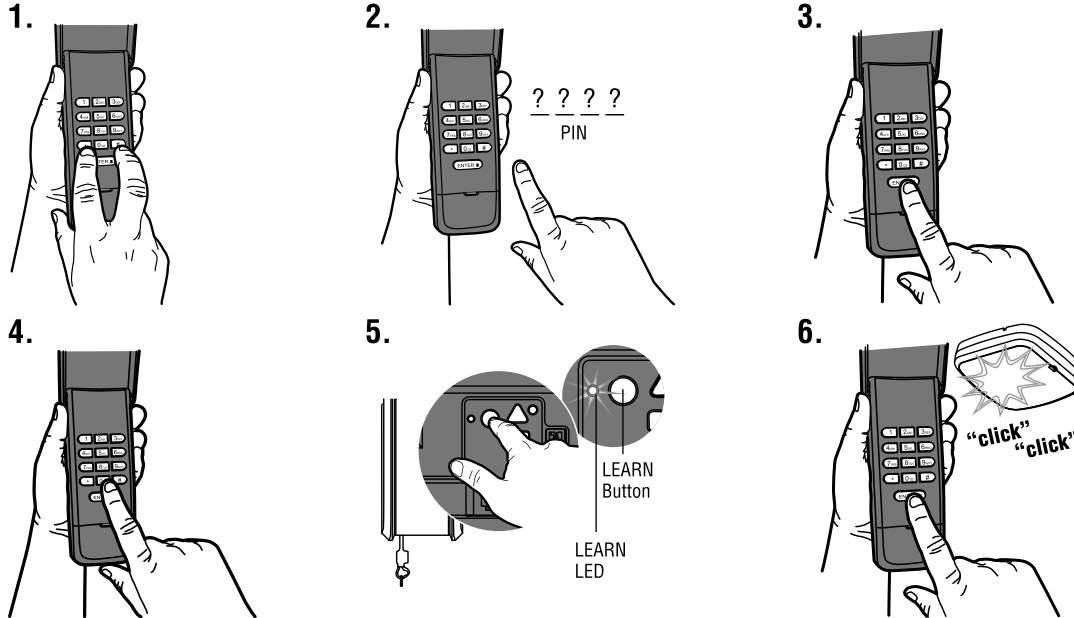
### Program a 893MAX remote control using the LEARN button on the operator.

1. Press and hold the program button on the remote control until the LED on the front of the remote control turns on.
2. Press and release the remote control button you wish to use and then press any other button to exit programming.
3. Press and release the LEARN button on the operator. The LEARN LED will light within 30 seconds.
4. Press the remote control button programmed in step 2 until the MyQ Remote LED light flashes or two clicks are heard.



### Program a 877MAX keyless entry pin using the LEARN button on the operator.

1. Press and hold the \* and # buttons until the lights on the keypad stop blinking.
2. Enter a 4-digit personal identification number (PIN) of your choice. Then press the # button.
3. Press and release the ENTER button one time.
4. To exit programming mode, press the 0 button.
5. Press and release the LEARN button on the operator. The LEARN LED will light within 30 seconds.
6. Enter the 4-digit personal identification number (PIN) programmed in step 2 then press and release the ENTER button until the operator lights flash or two clicks are heard.



To test, press the PIN, then press the ENTER button. The operator will activate.

To program other types of remote controls or keyless entries see the instructions included with the device or visit LiftMaster.com.

### MyQ Remote LED light (optional accessory)

Refer to LED light instructions for programming.

### Add MyQ serial number to MyQ App

To program the Wi-Fi operator to your network, refer to your owner's manual.